



Heat sink

MODEL NAME

# TEANN210470-000



MOUNTING PITCH

OVER ALL DIMENSION

WEIGHT

N/A<sub>mm</sub>

21.3<sub>W</sub>\*4.1<sub>H</sub>\*70<sub>Lmm</sub>

8.9<sub>G±5%</sub>

MATERIAL	AL SINK
THERMAL INTERFACE MATERIAL	30GTR-B
THERMAL RESISTANCE	N/A
FAN DIMENSION	N/A
RATED SPEED	N/A
AIR FLOW	N/A
ACOUSTIC NOISE	N/A

## NOTE

M.2-2280 SSD Heatsink

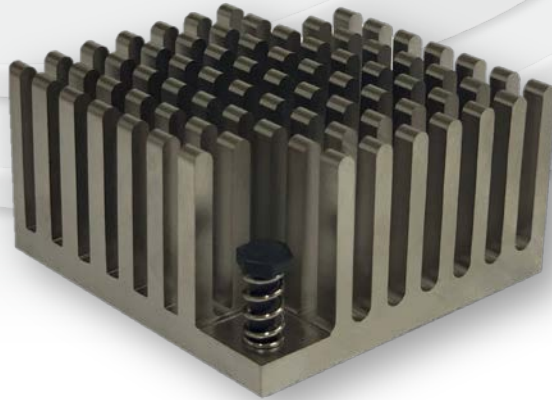
----

invn



MODEL NAME

**TEANN452445-001**



**MOUNTING PITCH**

**OVER ALL DIMENSION**

**WEIGHT**

**37\*37<sub>mm</sub>**

**45<sub>W</sub>\*24<sub>H</sub>\*45<sub>Lmm</sub>**

**48.9<sub>G</sub>±5%**

<b>MATERIAL</b>	AL SINK
<b>THERMAL INTERFACE MATERIAL</b>	N/A
<b>THERMAL RESISTANCE</b>	N/A
<b>FAN DIMENSION</b>	N/A
<b>RATED SPEED</b>	N/A
<b>AIR FLOW</b>	N/A
<b>ACOUSTIC NOISE</b>	N/A

**NOTE**

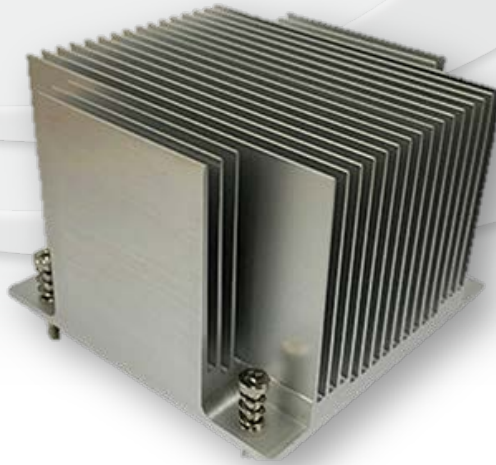
-----  
-----

invn



MODEL NAME

**TEANN866085-002**



**MOUNTING PITCH**

**75\*65<sub>mm</sub>**

**OVER ALL DIMENSION**

**85.8<sub>W</sub>\*60<sub>H</sub>\*85<sub>Lmm</sub>**

**WEIGHT**

**370<sub>G±5%</sub>**

<b>MATERIAL</b>	AL SINK
<b>THERMAL INTERFACE MATERIAL</b>	ShunEtsu X23-7762
<b>THERMAL RESISTANCE</b>	N/A
<b>FAN DIMENSION</b>	N/A
<b>RATED SPEED</b>	N/A
<b>AIR FLOW</b>	N/A
<b>ACOUSTIC NOISE</b>	N/A

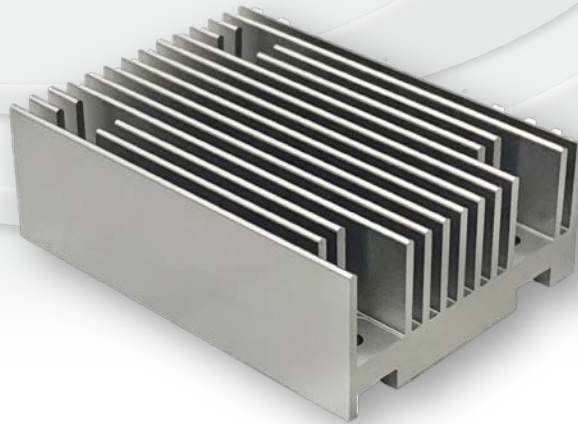
**NOTE**

-----  
-----



MODEL NAME

# TEANN442060-003



MOUNTING PITCH

OVER ALL DIMENSION

WEIGHT

30\*46<sub>mm</sub>

43.6<sub>W</sub>\*20<sub>H</sub>\*60<sub>L</sub><sub>mm</sub>

370<sub>G±5%</sub>

MATERIAL	AL SINK
THERMAL INTERFACE MATERIAL	N/A
THERMAL RESISTANCE	N/A
FAN DIMENSION	N/A
RATED SPEED	N/A
AIR FLOW	N/A
ACOUSTIC NOISE	N/A

## NOTE

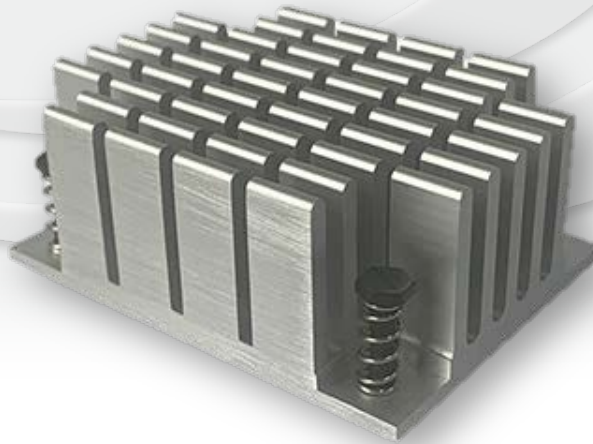
-----  
-----



Heat sink

MODEL NAME

# TEANN452460-004



MOUNTING PITCH

35\*49.5<sub>mm</sub>

OVER ALL DIMENSION

45<sub>W</sub>\*24<sub>H</sub>\*60<sub>L</sub><sub>mm</sub>

WEIGHT

79<sub>G±5%</sub>

MATERIAL	AL SINK
THERMAL INTERFACE MATERIAL	ShunEtsu X23-7762
THERMAL RESISTANCE	N/A
FAN DIMENSION	N/A
RATED SPEED	N/A
AIR FLOW	N/A
ACOUSTIC NOISE	N/A

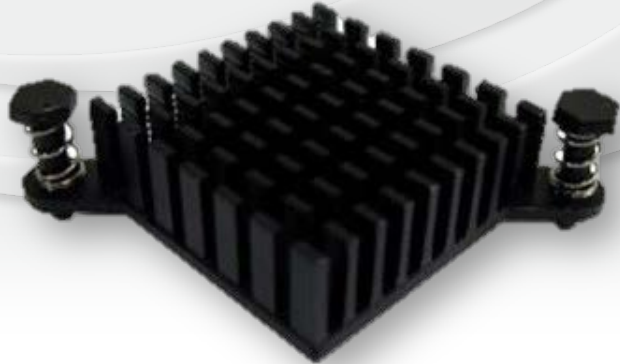
## NOTE

-----  
-----



MODEL NAME

# TEANN281028-005



MOUNTING PITCH

OVER ALL DIMENSION

WEIGHT

32.9\*32.9<sub>mm</sub>

28.2<sub>W</sub>\*10<sub>H</sub>\*28.2<sub>Lmm</sub>

9<sub>G±5%</sub>

MATERIAL	AL SINK
THERMAL INTERFACE MATERIAL	TM730
THERMAL RESISTANCE	N/A
FAN DIMENSION	N/A
RATED SPEED	N/A
AIR FLOW	N/A
ACOUSTIC NOISE	N/A

## NOTE

ADD FAN(3010) COOLER MODEL NAME : TEAAN282028-002

----



MODEL NAME

# TEANN413041-007



**MOUNTING PITCH**

**50.8\*20<sub>mm</sub>**

**OVER ALL DIMENSION**

**41.1<sub>W</sub>\*30<sub>H</sub>\*41.1<sub>Lmm</sub>**

**WEIGHT**

**35.6<sub>G</sub>±5%**

<b>MATERIAL</b>	AL SINK
<b>THERMAL INTERFACE MATERIAL</b>	SMX-8067
<b>THERMAL RESISTANCE</b>	N/A
<b>FAN DIMENSION</b>	N/A
<b>RATED SPEED</b>	N/A
<b>AIR FLOW</b>	N/A
<b>ACOUSTIC NOISE</b>	N/A

### NOTE

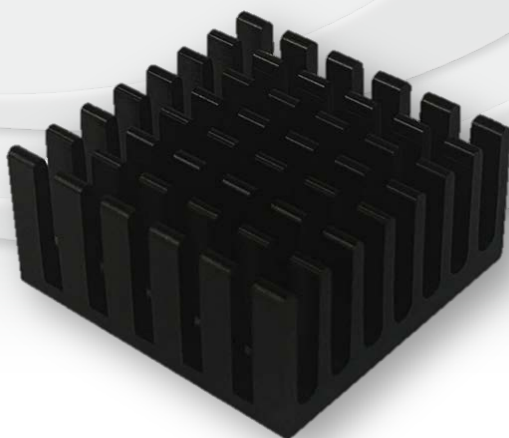
-----  
-----



Heat sink

MODEL NAME

# TEANN201020-008



**MOUNTING PITCH**

**OVER ALL DIMENSION**

**WEIGHT**

N/A<sub>mm</sub>

20<sub>W</sub> \* 10<sub>H</sub> \* 20<sub>L</sub>mm

4<sub>G</sub>±5%

MATERIAL	AL SINK
THERMAL INTERFACE MATERIAL	3M9448B
THERMAL RESISTANCE	N/A
FAN DIMENSION	N/A
RATED SPEED	N/A
AIR FLOW	N/A
ACOUSTIC NOISE	N/A

### NOTE

-----  
-----



invn



MODEL NAME

**TEANN502550-009**



**MOUNTING PITCH**

**OVER ALL DIMENSION**

**WEIGHT**

**40\*40<sub>mm</sub>**

**50<sub>W</sub>\*25<sub>H</sub>\*50<sub>Lmm</sub>**

**50.3<sub>G</sub>±5%**

<b>MATERIAL</b>	AL SINK
<b>THERMAL INTERFACE MATERIAL</b>	PCS CR 10
<b>THERMAL RESISTANCE</b>	N/A
<b>FAN DIMENSION</b>	N/A
<b>RATED SPEED</b>	N/A
<b>AIR FLOW</b>	N/A
<b>ACOUSTIC NOISE</b>	N/A

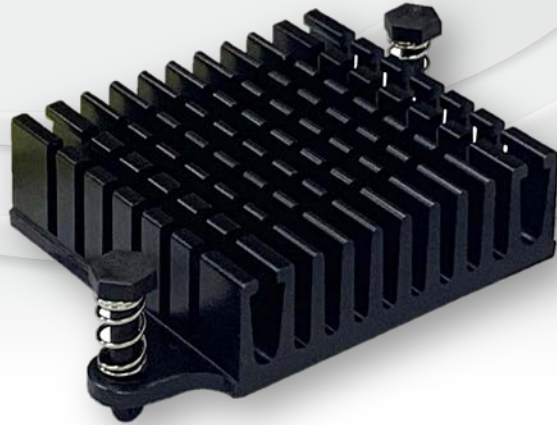
**NOTE**

-----  
-----



MODEL NAME

# TEANN381036-010



**MOUNTING PITCH**

**51\*20<sub>mm</sub>**

**OVER ALL DIMENSION**

**38.8<sub>W</sub>\*10<sub>H</sub>\*36<sub>Lmm</sub>**

**WEIGHT**

**18.6<sub>G</sub>±5%**

MATERIAL	AL SINK
THERMAL INTERFACE MATERIAL	N/A
THERMAL RESISTANCE	N/A
FAN DIMENSION	N/A
RATED SPEED	N/A
AIR FLOW	N/A
ACOUSTIC NOISE	N/A

## NOTE

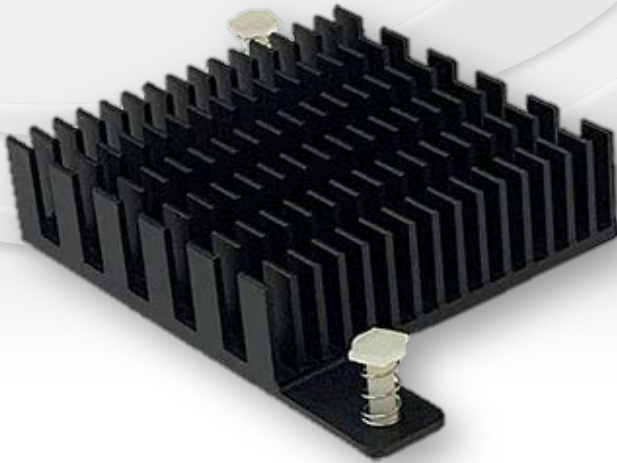
ADD FAN(4010) COOLER MODEL NAME : TEAAN4002240-000

----



MODEL NAME

# TEANN501583-012



MOUNTING PITCH

OVER ALL DIMENSION

WEIGHT

**73.4\*39.6**mm

**50<sub>W</sub>\*15<sub>H</sub>\*83.3<sub>L</sub>**mm

**32.2<sub>G</sub>±5%**

MATERIAL	AL SINK
THERMAL INTERFACE MATERIAL	GR45A Grey
THERMAL RESISTANCE	-----
FAN DIMENSION	-----
RATED SPEED	-----
AIR FLOW	-----
ACOUSTIC NOISE	-----

## NOTE

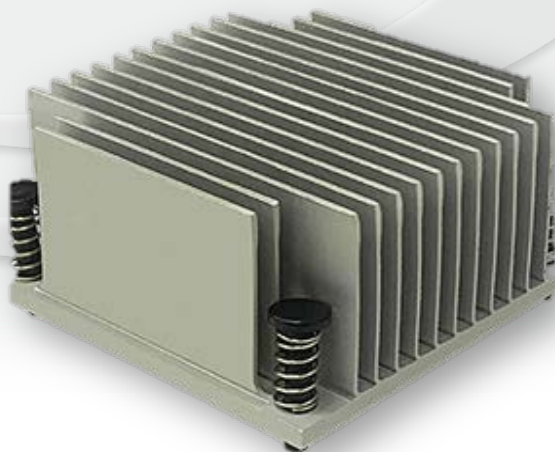
-----  
-----



Heat sink

MODEL NAME

# TSANN603260-000



**MOUNTING PITCH**

**OVER ALL DIMENSION**

**WEIGHT**

**51\*51**<sub>mm</sub>

**60<sub>W</sub>\*31.5<sub>H</sub>\*60**<sub>Lmm</sub>

**79.73**<sub>G±5%</sub>

MATERIAL	AL SINK
THERMAL INTERFACE MATERIAL	ShinEtsu X23-7762
THERMAL RESISTANCE	-----
FAN DIMENSION	-----
RATED SPEED	-----
AIR FLOW	-----
ACOUSTIC NOISE	-----

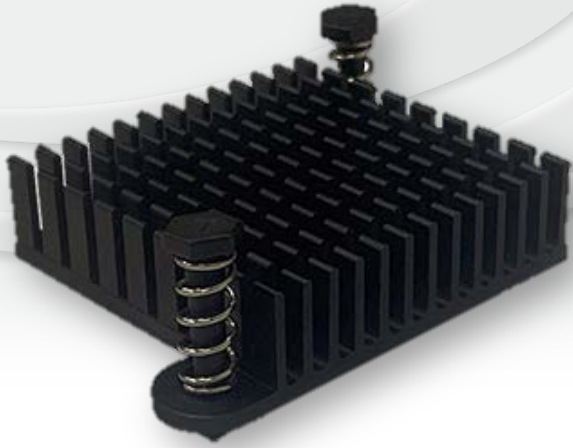
## NOTE

-----  
-----



MODEL NAME

# TEANN351035-013



MOUNTING PITCH

26\*41 mm

OVER ALL DIMENSION

35<sub>W</sub>\*10<sub>H</sub>\*35<sub>L</sub>mm

WEIGHT

12.7<sub>G</sub>±5%

MATERIAL	AL SINK
THERMAL INTERFACE MATERIAL	TC-CAB Pink
THERMAL RESISTANCE	-----
FAN DIMENSION	-----
RATED SPEED	-----
AIR FLOW	-----
ACOUSTIC NOISE	-----

## NOTE

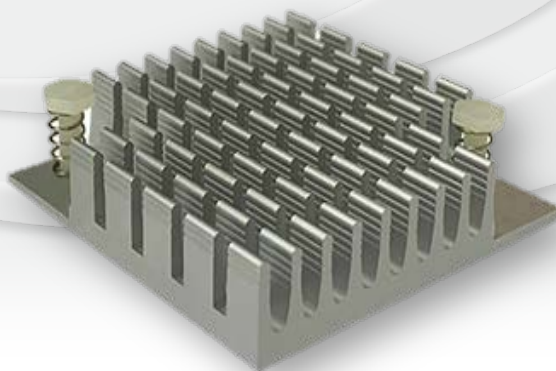
-----  
-----



Heat sink

MODEL NAME

# TEANN451045-014



MOUNTING PITCH

OVER ALL DIMENSION

WEIGHT

33\*33<sub>mm</sub>

45<sub>W</sub>\*10<sub>H</sub>\*45<sub>Lmm</sub>

23.3<sub>G±5%</sub>

MATERIAL	AL SINK
THERMAL INTERFACE MATERIAL	----
THERMAL RESISTANCE	----
FAN DIMENSION	----
RATED SPEED	----
AIR FLOW	----
ACOUSTIC NOISE	----

## NOTE

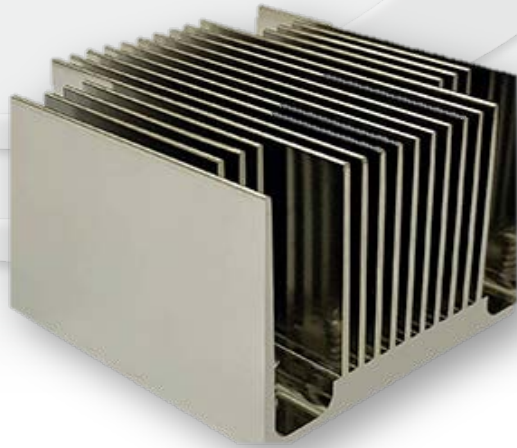
----  
----

invn



MODEL NAME

# TEANN664766-015



MOUNTING PITCH

OVER ALL DIMENSION

WEIGHT

**50\*50**<sub>mm</sub>

**66<sub>W</sub>\*47<sub>H</sub>\*66<sub>L</sub>**<sub>mm</sub>

**239**<sub>G±5%</sub>

MATERIAL	AL SINK
THERMAL INTERFACE MATERIAL	ShinEtsu X23-7762
THERMAL RESISTANCE	-----
FAN DIMENSION	-----
RATED SPEED	-----
AIR FLOW	-----
ACOUSTIC NOISE	-----

## NOTE

-----  
-----